

ICONiC

CABINETS



PREMIUM QUALITY. PREMIUM CRAFTSMANSHIP.
PREMIUM CABINETS.

In a search for **premium quality & craftsmanship** look no further.

At Iconic we have many different combinations of cabinet groupings for you to choose from. From small rolling units, to large workstations, our cabinet combinations are designed and built with our most commonly implemented combinations. We're sure you'll find the perfect combination of cabinets to compliment you and your lifestyle.

Our lineup of cabinets are the perfect compliment to any garage environment, providing the storage you need with the visual aesthetics and premium quality you expect from us.



ICONiC
CABINETS

UPPER
CABINETS





19x14 Inch Upper Cabinet, Single Door

WIDTH	HEIGHT	DEPTH	RH PART #	LH PART #	LBS/KG
19"	18"	14"	201	231	32/14
19"	24"	14"	203	233	38/17
19"	30"	14"	205	235	49/22

All upper units taller than 18" include 1 adjustable shelf.



19x24 Inch Upper Cabinet, Single Door

WIDTH	HEIGHT	DEPTH	RH PART #	LH PART #	LBS/KG
19"	18"	24"	202	232	50/22
19"	24"	24"	204	234	64/29
19"	30"	24"	206	236	68/30

All upper units taller than 18" include 1 adjustable shelf.



28x14 Inch Upper Cabinet, Dual Door

WIDTH	HEIGHT	DEPTH	PART #	LBS/KG
28"	18"	14"	210	50/22
28"	24"	14"	212	70/31
28"	30"	14"	214	82/37

All upper units taller than 18" include 1 adjustable shelf.



28x24 Inch Upper Cabinet, Dual Door

WIDTH	HEIGHT	DEPTH	PART #	LBS/KG
28"	18"	24"	211	88/40
28"	24"	24"	213	124/56
28"	30"	24"	215	135/60

All upper units taller than 18" include 1 adjustable shelf.



34x14 Inch Upper Cabinet, Dual Door

WIDTH	HEIGHT	DEPTH	PART #	LBS/KG
34"	18"	14"	216	55/24
34"	24"	14"	218	72/32
34"	30"	14"	220	88/39

All upper units taller than 18" include 1 adjustable shelf.



34x24 Inch Upper Cabinet, Dual Door

WIDTH	HEIGHT	DEPTH	PART #	LBS/KG
34"	18"	24"	217	92/41
34"	24"	24"	219	127/57
34"	30"	24"	221	155/70

All upper units taller than 18" include 1 adjustable shelf.



48x14 Inch Upper Cabinet, Dual Door

WIDTH	HEIGHT	DEPTH	PART #	LBS/KG
48"	18"	14"	222	73/33
48"	24"	14"	226	91/41
48"	30"	14"	227	108/48

All upper units taller than 18" include 1 adjustable shelf.



48x24 Inch Upper Cabinet, Dual Door

WIDTH	HEIGHT	DEPTH	PART #	LBS/KG
48"	18"	24"	223	94/42
48"	24"	24"	224	114/51
48"	30"	24"	225	133/60

All upper units taller than 18" include 1 adjustable shelf.



51x14 Inch Upper Cabinet, Three Door

WIDTH	HEIGHT	DEPTH	PART #	LBS/KG
51"	18"	14"	228	80/36
51"	24"	14"	229	101/45
51"	30"	14"	230	121/54

All upper units taller than 18" include 1 adjustable shelf.



Corner Unit Cabinets

WIDTH	HEIGHT	DEPTH	PART #	LBS/KG
24"	18"	24"	207	72/32
24"	24"	24"	208	88/39
24"	30"	24"	209	107/48

All upper units taller than 18" include 1 adjustable shelf.

ICONiC

CABINETS

LOWER CABINETS





30x24 Inch Lower Cabinet, Dual Door

WIDTH	HEIGHT	DEPTH	RH PART #	LH PART #	LBS/KG
19"	30"	24"	101	105	72/32
28"	30"	24"	102	N/A	120/54
34"	30"	24"	103	N/A	125/56

Includes 1 adjustable shelf. Base channel & countertop sold separately.



30x24 Inch Lower Cabinet, 1x4" Drawer

WIDTH	HEIGHT	DEPTH	RH PART #	LH PART #	LBS/KG
19"	30"	24"	401	415	130/58
28"	30"	24"	404	N/A	150/68
34"	30"	24"	407	N/A	160/72

Drawer liners and 1 adjustable shelf included. Base channel & countertop sold separately.



30x24 Inch Lower Cabinet, 2x2.5" Drawer

WIDTH	HEIGHT	DEPTH	RH PART #	LH PART #	LBS/KG
19"	30"	24"	402	416	130/58
28"	30"	24"	405	N/A	160/72
34"	30"	24"	408	N/A	165/74

Drawer liners and 1 adjustable shelf included. Base channel & countertop sold separately.



30x24 Inch Lower Cabinet, Toolchest

WIDTH	HEIGHT	DEPTH	PART #	FEATURES	LBS/KG
19"	30"	24"	403	4x3", 1x6" and 1x8" Drawers	225/102
28"	30"	24"	406	4x3", 1x6" and 1x8" Drawers	250/113
34"	30"	24"	409	4x3", 1x6" and 1x8" Drawers	260/117

Drawer liners included. Base channel & countertop sold separately.



51x24 Inch Lower Cabinet, Drawer Unit

WIDTH	HEIGHT	DEPTH	PART #	FEATURES	LBS/KG
51"	30"	24"	410	1x19" & 1x34" sets, 1x51" Drawers	333/151

Drawer liners included. Base channel & countertop sold separately.



36x24 Inch "Open To Floor" Unit

WIDTH	HEIGHT	DEPTH	RH PART #	LH PART #	FEATURES	LBS/KG
28"	36"	24"	106	108	Door Included	103/46
28"	36"	24"	107	N/A	No Door	93/42

Countertop sold separately.



36 Inch "Open To Floor" Corner Unit

WIDTH	HEIGHT	DEPTH	RH PART #	LH PART #	LBS/KG
28"	36"	N/A	110	104	44/19

ICONiC
CABINETS

ROLLING TOOLCHESTS





28 Inch Rolling Toolchest

WIDTH	HEIGHT	DEPTH	PART #	FEATURES	LBS/KG
28"	36"	24"	411	4x3", 1x6" and 1x8" DRAWERS	211/95



34 Inch Tool Cart

WIDTH	HEIGHT	DEPTH	PART #	FEATURES	LBS/KG
34"	36"	24"	417	1x3" and 1x6" DRAWERS	156/70



34 Inch Rolling Toolchest

WIDTH	HEIGHT	DEPTH	PART #	FEATURES	LBS/KG
34"	36"	24"	412	4x3", 1x6" and 1x8" DRAWERS	242/109



51 Inch Rolling Toolchest With Door

WIDTH	HEIGHT	DEPTH	PART #	FEATURES	LBS/KG
51"	42"	24"	413	1x51" Drawer, 1x Door, 1x6-Drawers	360/163



51 Inch Rolling All-Drawer Toolchest

WIDTH	HEIGHT	DEPTH	PART #	FEATURES	LBS/KG
51"	42"	24"	414	8x2", 2x4", 2x6" & 1x51" Drawers	422/191

All Rolling Cabinets Features

FEATURES

- ◆ 250lb drawer slides
- ◆ Fully locking drawers
- ◆ 1/8" thick drawer liners
- ◆ 6.5" polyurethane castors with total lock brakes (1200lb capacity)
- ◆ Stainless steel counter tops

ICONiC
CABINETS

CLOSET
UNITS





28 Inch Wide Closet Units, Single Door

WIDTH	HEIGHT	DEPTH	RH PART #	LH PART #	LBS/KG
28"	75"	14"	306	307	200/90
28"	75"	24"	301	304	250/113

Includes 2 adjustable shelves.



34 Inch Wide Closet Units, Single Door

WIDTH	HEIGHT	DEPTH	RH PART #	LH PART #	LBS/KG
34"	75"	14"	308	309	210/95
34"	75"	24"	302	305	260/117

Includes 2 adjustable shelves.



48 Inch Wide Closet Units, Dual Door

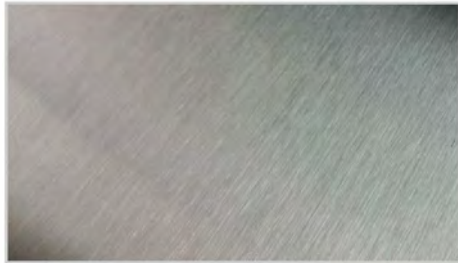
WIDTH	HEIGHT	DEPTH	PART #	LBS/KG
48"	75"	14"	310	340/154
48"	75"	24"	303	390/176

Includes 2 adjustable shelves.

ICONiC
CABINETS

COUNTER
TOPS





16 Ga. Stainless Steel Counter

WIDTH	FACE	DEPTH	THICKNESS	PART #	LBS/KG per ft.
per ft.	1"	24"	.0598"	501	6/2
per ft.	2"	24"	.0598"	503	6/2



16 Ga. Powdercoated Steel Counter

WIDTH	FACE	DEPTH	THICKNESS	PART #	LBS/KG per ft.
per ft.	1"	24"	.0598"	724	5/2
per ft.	2"	24"	.0598"	???	5/2

ICONiC

CABINETS

CABINET ACCESSORIES





19 Inch Wide Shelves

WIDTH	HEIGHT	DEPTH	PART #	LBS/KG
19"	N/A	14"	701	3/1
19"	N/A	24"	702	6/2



28 Inch Wide Shelves

WIDTH	HEIGHT	DEPTH	PART #	LBS/KG
28"	N/A	14"	703	4/1
28"	N/A	24"	704	8/3



34 Inch Wide Shelves

WIDTH	HEIGHT	DEPTH	PART #	LBS/KG
34"	N/A	14"	705	5/2
34"	N/A	24"	706	10/4



48 Inch Wide Shelves

WIDTH	HEIGHT	DEPTH	PART #	LBS/KG
48"	N/A	14"	707	6/2
48"	N/A	24"	708	12/5



19 Inch Base Channel

WIDTH	HEIGHT	DEPTH	PART #	LBS/KG
19"	6" with feet	22"	710	12/5
19"	6" with feet	12"	727	9/4



28 Inch Base Channel

WIDTH	HEIGHT	DEPTH	PART #	LBS/KG
28"	6" with feet	22"	711	15/6
28"	6" with feet	12"	728	12/5



34 Inch Base Channel

WIDTH	HEIGHT	DEPTH	PART #	LBS/KG
34"	6" with feet	22"	712	16/7
34"	6" with feet	12"	729	14/6



48 Inch Base Channel

WIDTH	HEIGHT	DEPTH	PART #	LBS/KG
48"	6" with feet	22"	713	20/9
48"	6" with feet	12"	730	18/8



Back Splashes

WIDTH	HEIGHT	THICKNESS	PART #	LBS/KG per ft.
per ft.	24"	0.125"	716	5/2
per ft.	48"	0.125"	725	10/4



Kickplate Cover/Trim

WIDTH	HEIGHT	THICKNESS	PART #	LBS/KG per ft.
per ft.	6"	0.125"	715	2/1
per ft.	8"	0.125"	722	3/1



Feet and Casters

DESCRIPTION	# IN SET	PART #	LBS/KG
Gable Extension Legs	1	714	4/1
Castors (5" diameter)	4	717	36/16



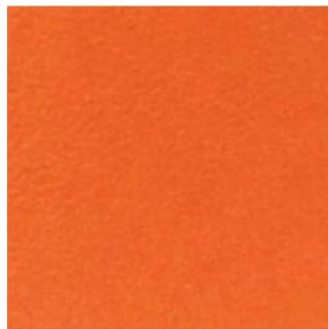
Latch Selection

DESCRIPTION	PART #	LBS/KG
Zinc Latches (Non-Lockable)	718	0.5/0.2
Zinc Latches (Lockable)	719	0.5/0.2
Black Powdercoated Latches (Non-Lockable)	720	0.5/0.2
Black Powdercoated Latches (Lockable)	721	0.5/0.2

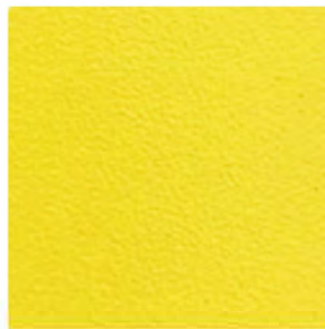
Colour Selection



F1 RED



NITRO ORANGE



MELLOW YELLOW



MERCURY BLUE



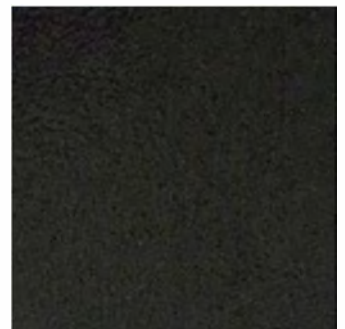
GHOST WHITE



HAMMERED SILVER



HAMMERED COPPER



CARBON BLACK

ICONiC

CABINETS

CABINET COMBINATIONS





Bronze Combination

FEATURES

- 1x 34" 6 drawer base
- 1x 34" 1 drawer, 2 door base
- 2x 24" 2-door, 1 shelf uppers



Silver Combination

FEATURES

- 1x 34" 1 drawer, 2 door base
- 1x 34" 2 drawer, 2 door base
- 2x 24" 2 door uppers
- 1x 18" 2 door upper



Gold Combination

FEATURES

- 1x 34" 6 drawer base
- 1x 34" 2 door, 1 drawer base
- 2x 24" 2 door uppers
- 1x 28" closet



Platinum Combination

FEATURES

- 1x 34" 6 drawer base
- 1x 34" 2 door base
- 2x 24" 2 door uppers
- 2x 28" closets



Iconic Combination

FEATURES

1x 34" 6 drawer base

2x 34" 2 door bases

2x 48" 2 door closets

2x 24" 2 door uppers

1x 18" 2 door, upper

BUILD A COMBINATION

Custom Combination

FEATURES

Create your own custom combination

Custom cabinet dimensions

Custom finishes

Specialty cabinets available

ex. TV enclosures, fridges, sound enclosures.

ICONiC

CABINETS

1.403.519.0074
www.ICONICCABINETS.com